

MARINE TRACER™

Powered by Marine Tensor™



VESSEL SPECIFICATIONS

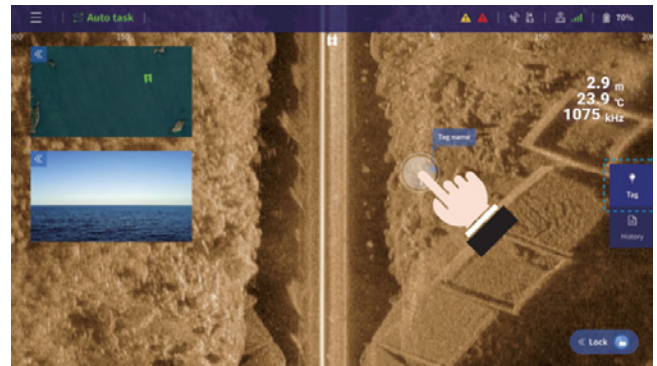
Physical		Communications	
Dimensions	0.83 x 0.52 x 0.30 m (32.6 x 20.5 x 11.8 in.)	Navigation Remote Frequency	2.4 GHz FHSS
Length	0.83 m (32.6 in.)	Communications Range	8.0 km (4.97 mi.)
Beam	0.52 m (20.5 in.)	Performance	
Draft	0.11 m (4.3 in.)	Speed (operational)	1 knot
Weight (operational)	14.5 kg (32.0 lb.)	Speed (maximum)	2 knots
Weight (maximum)	18.5 kg (40.8 lb.)	Endurance (operational)	5.5 hours
Hull Material	Injection-Molded ABS	Endurance (standby)	40 hours
Propulsion	Dual Brushless 12V DC Motors	Operational Environment	Beaufort Scale 3
Battery	QUAD 128 Wh LiFePO4	Operating Temperature	0-40 °C (32-104 °F)
Waterproof Rating	IP55		
Towing Capacity	5 kg (11.0 lb.)		



Marine Thinking Inc.
Suite 110, 1096 Marginal Road, Halifax, NS B3H 4N4
info@marinethinking.com
marinethinking.com



CONTROLLER SPECIFICATIONS



SENSOR SPECIFICATIONS

Physical		Sonar	
Dimensions	272 x 140 x 70 mm (10.7 x 5.5 x 2.8 in.)	Sonar Features	3 Operational Modes: Side Imaging, Down Imaging, and Dual Spectrum
Weight	1.1 kg (2.4 lb.)		CHIRP
Screen	1080p FHD IPS Touchscreen		Built-in Temperature Probe
Screen Size	7 in. 1920x1200p	Sonar Depth	Side Imaging: 146 m (480 ft) @ 455 kHz, 23 m (75 ft) @ 1075-1150 kHz
Charging	USB Type-C (9V 2A), 18 W Fast Charge		Down Imaging: 146 m (480 ft) @ 455 kHz, 23 m (75 ft) @ 1075-1150 kHz
Interface	SBUS/PPM, RJ45 Network Interface, Wireless RTSP Video Streaming and Sharing, USB-A, USB-C, MicroSD		Dual Spectrum: 366 m (1,200 ft) @ 140-240 kHz
Waterproof Rating	IP67		
Communications			
Number of Channels	16	Optical Camera	
Modulation	FHSS	Dimensions	102 x 43 x 37 mm (4.0 x 1.7 x 1.5 in.)
Frequency	2.4 GHz (2.400-2.483 GHz)	Weight	55 g (0.1 lb.)
RF Power	20 dB@CE / 23 dB@FCC	Resolution	1080p FHD
Performance		Field of View	120°
Endurance	8-15 hours	Lights	Dual 400 Lumens



Marine Thinking Inc.
Suite 110, 1096 Marginal Road, Halifax, NS B3H 4N4
info@marinethinking.com
marinethinking.com